

Ports  
Management



Contract  
Logistics

Equipment  
Leasing



Power  
Rental



**CORPORATE  
PROFILE**



# CONTENTS

1

## COMPANY

About Us, History, Mission, Values, Customers, Facilities, Structure, Enablers and Certifications.

2

## OUR SERVICES

Ports Management, Contract Logistics, Equipment Leasing and Power Rental.



# ABOUT US

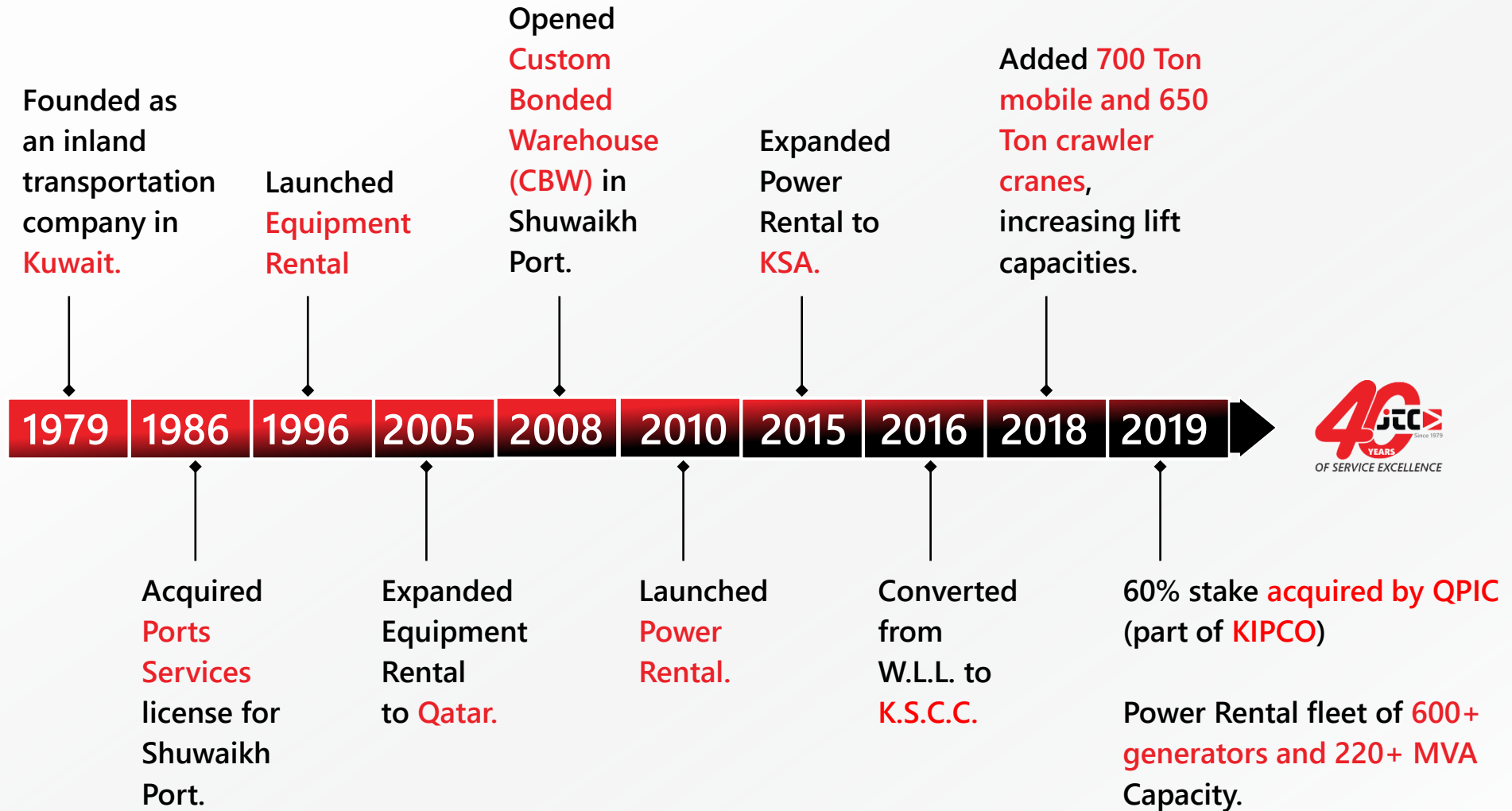
Our professional team have been providing clients with high-quality equipment on rent, temporary power, logistics support and best-in-class stevedoring services since 1979.

We focus on the equipment and services, so you can focus on the project execution.



# A QUICK HISTORY

OVER 40 YEARS OF GROWTH AND EXPANSION





# MISSION

JTC seeks to be one of the leading service providers in GCC for equipment rental, temporary power, ports management and logistics support.

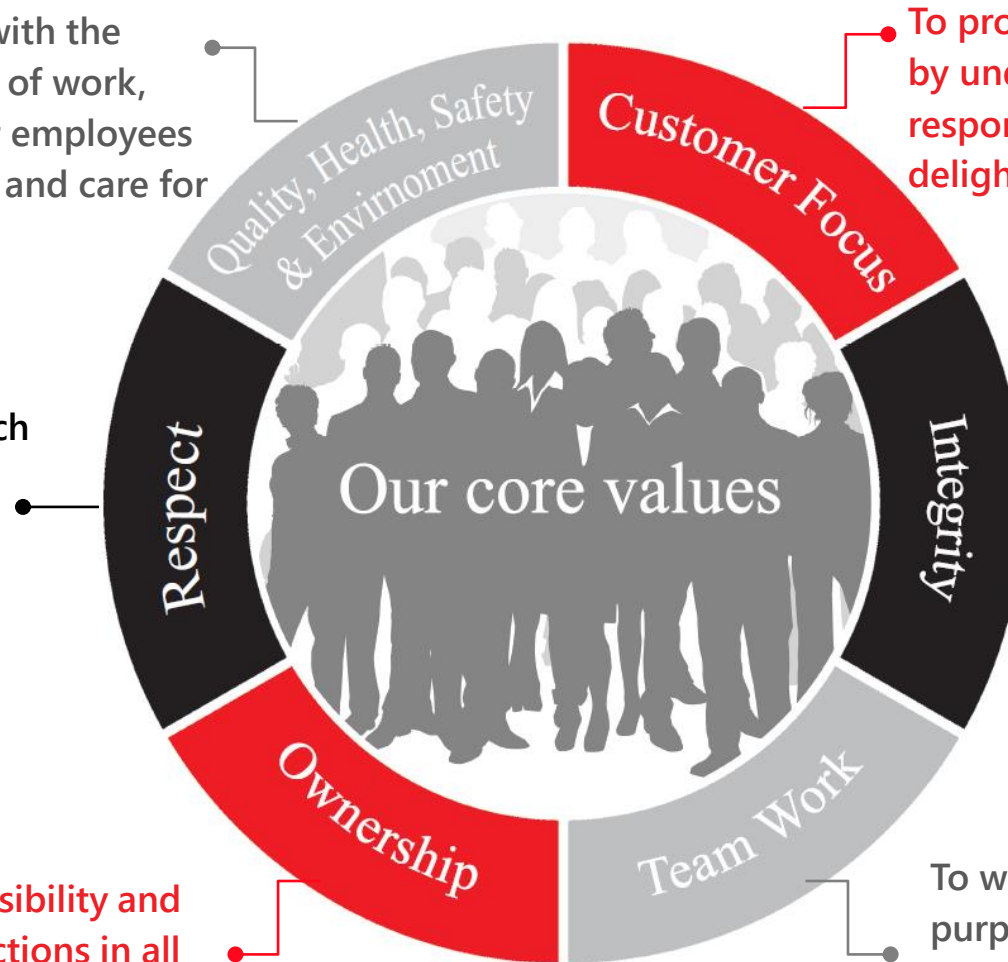
Using a diversified mix of quality assets, state-of-the-art infrastructure and talented people, we create a safe and awesome customer experience innovatively.

# CORE VALUES

To deliver our services with the utmost focus on quality of work, health and safety of our employees and other stakeholders, and care for the environment.

To value and respect each individual while nurturing an environment that will flourish as a team.

To take personal responsibility and accountability for our actions in all areas of our work.



To provide excellent customer service by understanding their business, responding to their needs, and delighting them always.

To follow our moral or ethical convictions and doing the right thing in all circumstances; to conduct ourselves with the highest levels of honesty, dependability, professionalism and ethical standards.

To work collectively with shared purpose and vision, support each other to face problems and solve them.



# KEY CUSTOMERS

WE SERVE THE **INDUSTRY LEADERS** RELIABLY

## MINISTRY / GOVERNMENT



## OIL & GAS



## CONSTRUCTION



## SHIPPING



## KSA, QATAR & OTHER SECTORS



# REGIONAL FOOTPRINT

OUR **OFFICES AND FACILITIES** SERVE YOU EFFICIENTLY



## DAMMAM

Facility includes

- ✓ *Power Rental Office*
- ✓ *Generator*
- Maintenance Yard*

## DOHA

Facility includes

- ✓ *Equipment Leasing Office*
- ✓ *Equipment Staging Yard & Workshop*

## 1. HEAD OFFICE – Near Shuwaikh Port

Facility includes

- ✓ *Container Terminal Yard*
- ✓ *General Cargo Storage Area*
- ✓ *Custom Bonded Warehouse*
- ✓ *Heavy Equipment Workshop*

## 2. MINA ABDULLAH – Near Shuaiba Port

Facility includes

- ✓ *Open Storage*
- ✓ *Covered Warehouse*
- ✓ *24/7 Operations Rooms*
- ✓ *Heavy transport and lifting equipment staging yard & workshop*
- ✓ *Power Rental Workshop & Offices*

## 3. EAST AHMADI – Near KNPC, KOC, KGOB

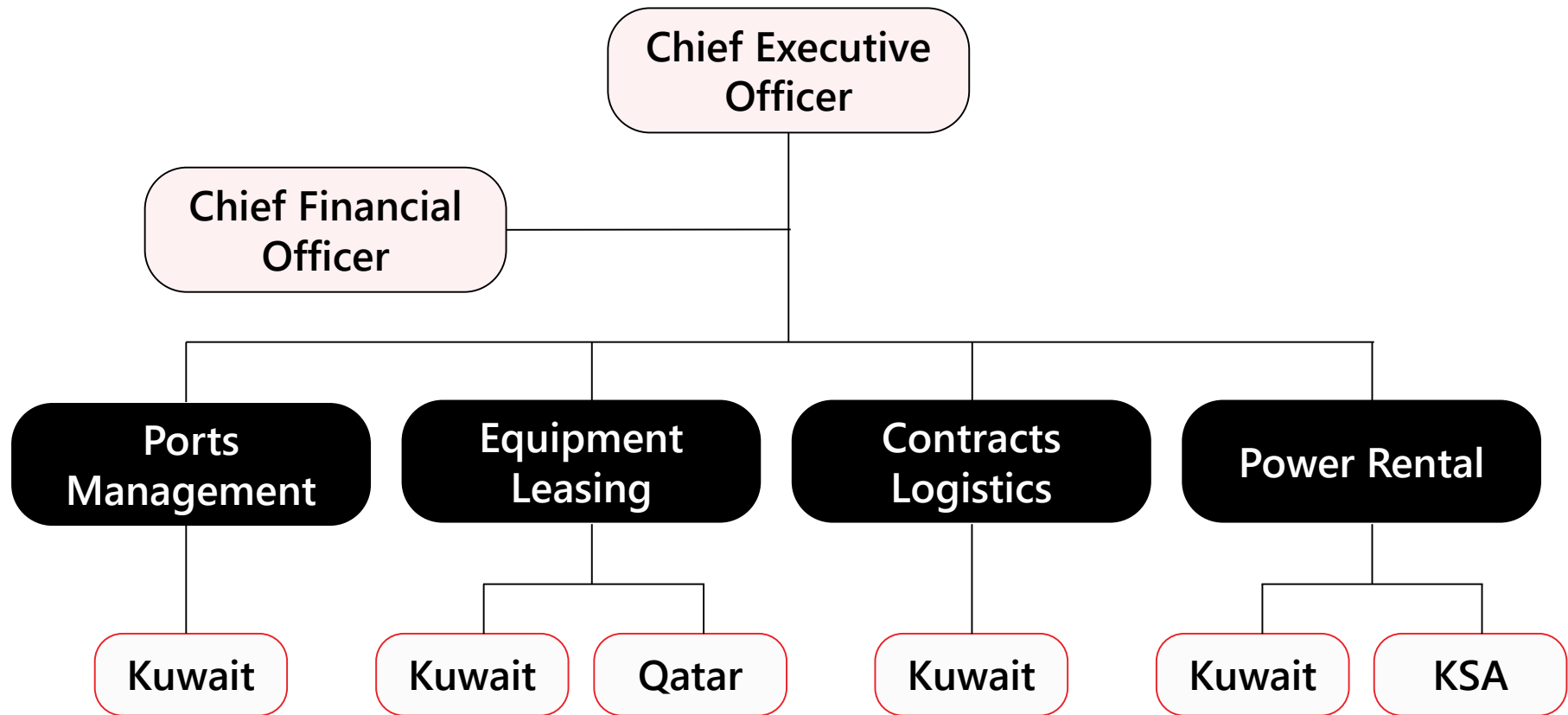
Facility includes

- ✓ *Offices of Equipment Leasing Division*



# FUNCTIONAL STRUCTURE

FORMULATED TO **GIVE YOU THE BEST SUPPORT** SEAMLESSLY



# BUSINESS ENABLERS

ADOPTED TO **GIVE YOU THE BEST EXPERIENCE** CONSISTENTLY

1

## INFORMATION TECHNOLOGY

OPERATIONS POWERED BY THE BEST BUSINESS SUITE PLATFORM FOR ERP AND MANAGEMENT.



2

## MAINTENANCE TECHNOLOGY

EQUIPMENT MAINTENANCE BENCHMARKED TO BEST PRACTICES GLOBALLY.





# QHSE - CERTIFICATIONS (IMS)



ASSURING YOU **GLOBAL SERVICE STANDARDS** AND **QHSE EXCELLENCE**



**BUREAU VERITAS**  
Certification

**JASSIM TRANSPORT & STEVEDORING CO. K.S.C.C.**  
Murgab Area Block1, Building 8, Floor 5 office 2,  
P. O. Box 22801, Safat 13089,  
**STATE OF KUWAIT**

This is a multi-site certificate, additional site(s) are listed on the next page(s)

*Bureau Veritas Certification Holding SAS – UK Branch certifies that the Management System of the above organisation has been audited and found to be in accordance with the requirements of the management system standards detailed below*

---

**ISO 9001:2015**  
*Scope of certification*

---

**PORTS MANAGEMENT INCLUDING: CONTAINER TERMINAL, CONTAINER & GERNERAL CARGO STERVEDORING AND CUSTOM BONDED WAREHOUSING.**  
**CONTRACT LOGISTICS INCLUDING: BULK FUEL, PROJECT CARGO AND HEAVY LIFT TRANSPORTATION, CUSTOMS CLEARANCE AND WAREHOUSING.**  
**EQUIPMENT LEASING INCLUDING: CRANES, MATERIAL HANDLING EQUIPMENT, MOBILE PLANT AND INDUSTRIAL RELATED EQUIPMENT.**  
**POWER RENTAL INCLUDING: INDEPENDENT POWER PROJEKTS, OIL FIELDS PROJECTS AND ON DEMAND RENTAL**

Original cycle start date: **4-May-2010**  
Expiry date of previous cycle: **3-May-2019**  
Re-certification Audit date: **11-Apr-2019**  
Re-Certification cycle start date: **3-May-2019**

Subject to the continued satisfactory operation of the organization's Management System, this certificate expires on: 3-May-2022

**Certificate No. IND19.8704U/Q**      Version: **No.1**      Revision date: **3-May-2019**

*[Signature]*

Certification body address: 5<sup>th</sup> Floor, 66 Prescot Street, London E1 8HG, United Kingdom  
Local office: Block D, Street 60, Plot 30, Shuwaikh Industrial Area  
P. O. Box 1476, Dajnef, Farwaniya, 81025, Kuwait




0008

Further clarifications regarding the scope of this certificate and the applicability of the management System requirements may be obtained by consulting the organisation.  
To check this certificate validity please call: **(+965 24825977)**

UKAS Certificate Template multisite rev.3.3 1 / 5 March 01, 2019



**BUREAU VERITAS**  
Certification

**JASSIM TRANSPORT & STEVEDORING CO. K.S.C.C.**  
Murgab Area Block1, Building 8, Floor 5 office 2,  
P. O. Box 22801, Safat 13089,  
**STATE OF KUWAIT**

This is a multi-site certificate, additional site(s) are listed on the next page(s)

*Bureau Veritas Certification Holding SAS – UK Branch certifies that the Management System of the above organisation has been audited and found to be in accordance with the requirements of the management system standards detailed below*

---

**OHSAS 18001:2007**  
*Scope of certification*

---

**PORTS MANAGEMENT INCLUDING: CONTAINER TERMINAL, CONTAINER & GERNERAL CARGO STERVEDORING AND CUSTOM BONDED WAREHOUSING.**  
**CONTRACT LOGISTICS INCLUDING: BULK FUEL, PROJECT CARGO AND HEAVY LIFT TRANSPORTATION, CUSTOMS CLEARANCE AND WAREHOUSING.**  
**EQUIPMENT LEASING INCLUDING: CRANES, MATERIAL HANDLING EQUIPMENT, MOBILE PLANT AND INDUSTRIAL RELATED EQUIPMENT.**  
**POWER RENTAL INCLUDING: INDEPENDENT POWER PROJEKTS, OIL FIELDS PROJECTS AND ON DEMAND RENTAL**

Original cycle start date: **4-May-2010**  
Expiry date of previous cycle: **3-May-2019**  
Re-certification Audit date: **11-Apr-2019**  
Re-Certification cycle start date: **3-May-2019**

Subject to the continued satisfactory operation of the organization's Management System, this certificate expires on: 11-Mar-2021

**Certificate No. IND19.8704U/HS**      Version: **No.1**      Revision date: **3-May-2019**

*[Signature]*

Certification body address: 5<sup>th</sup> Floor, 66 Prescot Street, London E1 8HG, United Kingdom  
Local office: Block D, Street 60, Plot 30, Shuwaikh Industrial Area  
P. O. Box 1476, Dajnef, Farwaniya, 81025, Kuwait




0008

Further clarifications regarding the scope of this certificate and the applicability of the management System requirements may be obtained by consulting the organisation.  
To check this certificate validity please call: **(+965 24825977)**

UKAS Certificate Template multisite rev.3.3 1 / 5 March 01, 2019

# OUR SERVICES

THROUGH **FOUR BUSINESS DIVISIONS**



1

## PORTS

- ❑ *CONTAINER OPERATIONS & STEVEDORING*
- ❑ *ROLL-ON/ROLL-OFF OPERATIONS*
- ❑ *GENERAL CARGO*
- ❑ *CONTAINER TERMINAL MANAGEMENT*
- ❑ *CUSTOM BONDED WAREHOUSING – SHUWAIKH*
- ❑ *CUSTOMS CLEARANCE*

2

## CONTRACT LOGISTICS

- ❑ *FUEL TRANSPORTATION & FUEL MANAGEMENT SYSTEM*
- ❑ *OPEN STORAGE & COVERED WAREHOUSE – MINA ABDULLAH*
- ❑ *PROJECT CARGO TRANSPORTATION*

3

## EQUIPMENT LEASING

- ❑ *CRANES*
- ❑ *HEAVY LIFT*
- ❑ *MATERIAL HANDLING EQUIPMENT*
- ❑ *INDUSTRIAL EQUIPMENT (COMPRESSORS, WELDING & RELATED EQUIPMENT)*

4

## POWER RENTAL

- ❑ *INDEPENDENT POWER PROJECTS*
- ❑ *OIL FIELD PROJECTS*
- ❑ *ON DEMAND RENTAL*





# PORTS MANAGEMENT

DELIVERED FROM THE SHIP TO YOUR STORAGE SITE SEAMLESSLY



# OVERVIEW



**SINGLE-STOP-SHOP SERVICE OF YOUR CARGO IN KUWAIT**



**STEVEDORING, HANDLING, TRANSPORTATION, STORAGE, BONDED WAREHOUSE, WEIGH BRIDGE, REEFER PLUGGING FACILITY, LCL, CUSTOMS CLEARING, AND VALUE-ADDED SERVICES.**

**365 DAYS/YEAR, 24x7 OPERATIONS**





# STEVEDORING

QUALIFIED AND PROFESSIONAL HANDLING

**CONTAINER** VESSELS

**RORO** VESSELS

**HEAVY LIFT** VESSELS

**SEMI-HEAVY LIFT** VESSELS

**BREAK BULK** VESSELS





# TRANSPORTATION

FROM PORT TO YOUR STORAGE FACILITY (TO & FRO)

SHUTTLING OF **CONTAINERS**

AND **GENERAL CARGO**



# STORAGE

SPACIOUS AND SAFE

**CONTAINER  
TERMINAL**

**350,000 TEUs**  
THROUGHPUT/YEAR

**EMPTY:** 3,500 TEUs / 4-STACK HIGH

**LADEN:** 3,500 TEUs / 3-STACK HIGH

**GENERAL CARGO**

EQUIPPED WITH **SPECIALIZED EQUIPMENT.**

FENCED FOR **HIGH SECURITY.**





# BONDED WAREHOUSE

24 x 7 SECURED. ADJACENT TO SHUWAIKH PORT

ADVANCED INVENTORY MANAGEMENT SYSTEM

24/7 ON-SITE CUSTOMS INSPECTORS AND AUDITORS

**70,000 M<sup>2</sup>**  
OPEN YARD

**5,000 M<sup>2</sup>**  
COVERED





# HANDLING

SAFE, PROFESSIONAL AND COMPLIANT

## CONTAINER TERMINAL

LOADING, UNLOADING, AND STACKING OF  
OOG, HAZARDOUS AND/OR REEFER CONTAINERS

## GENERAL CARGO

CEMENT, PIPES, COILS, LOOSE CARGO,  
STEEL, TIMBER, AND/OR RORO



# REEFER PLUGGING FACILITY

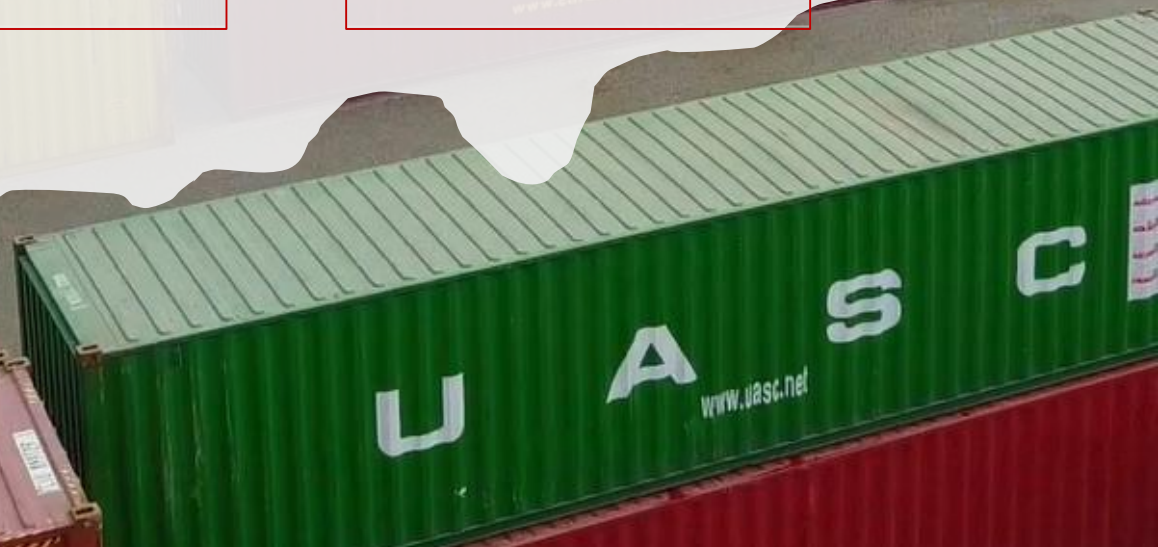


**180** POWER LINE CONNECTIONS

**465** GENSET CONNECTIONS

**PTI** FACILITY

**24 X 7**  
MONITORING





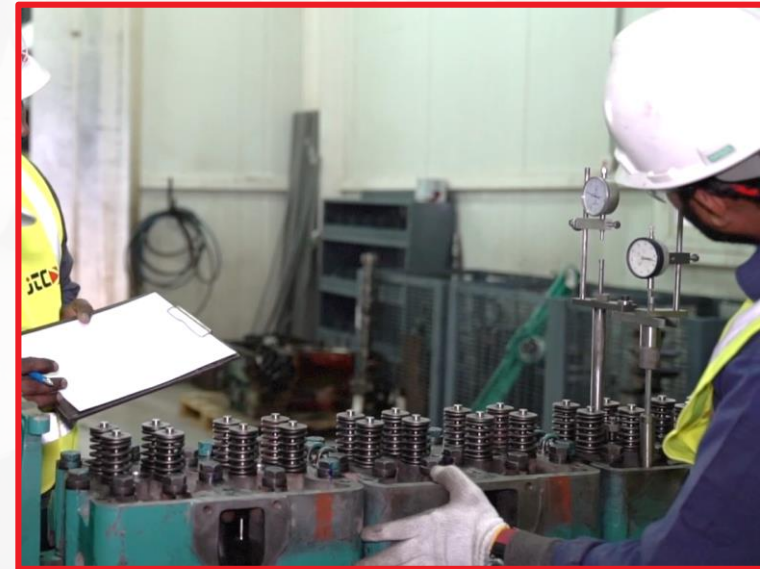
# VALUE ADDED SERVICES

**CUSTOMS CLEARANCE** SERVICES.

**365 DAYS** OPERATIONS A YEAR.

ADVANCED **ERP MANAGEMENT** SYSTEM.

FULL **MAINTENANCE AND TECHNICAL SUPPORT.**







# CONTRACT LOGISTICS

TRANSPORTATION AND WAREHOUSING IN KUWAIT



# OVERVIEW



TURNKEY **TRANSPORTATION AND STORAGE** PROVIDER IN KUWAIT



## TRANSPORTATION

- GENERAL TRANSPORT
- PROJECT LOGISTICS
- FUEL TRANSPORT
- OVER LAND TRANSPORT

## COVERED WAREHOUSE & OPEN STORAGE IN MINA ABDULLAH



**300+** ASSETS    24x7 OPERATIONS  
365 DAYS / YEAR



# GENERAL TRANSPORT

OVER 300 ASSETS FOR YOUR ON-TIME DELIVERIES



## HEADS 4X2 AND 6X4 PRIMEMOVER



## FLAT BEDS

12 – 18 M LONG

## LOW BEDS

UPTO 100 TONS



# FUEL TRANSPORT

EXPERTS IN VARIOUS PETROLEUM GRADES.

KNPC APPROVED. WELL MAINTAINED FLEET.



MAJOR BULK FUEL TRANSPORTER SINCE 1979



**155** MILLION LITERS **ANNUAL CAPACITY**



# OPEN STORAGE FACILITY AND COVERED WAREHOUSE

10 KMS FROM SHUAIBA PORT WITH PROXIMITY TO KNPC, KOC AND MAJOR NEW PROJECTS

**150,000 M<sup>2</sup>**

OPEN YARD

**5,000 M<sup>2</sup>**

COVERED

**24 X 7**

OPERATIONS

**24 HOURS**

SECURED



# VALUE-ADDED SERVICES

**DRIVERS TRAINED IN-HOUSE.**

**ADVANCED ERP MANAGEMENT SYSTEM.**

**24x7 OPERATIONS, 365 DAYS A YEAR.**

**FULL MAINTENANCE AND TECHNICAL SUPPORT.**







# EQUIPMENT LEASING

PLAIN RENTALS TO FLEET **EXECUTION** IN KUWAIT & QATAR





# OVERVIEW



EQUIPMENT ON-DEMAND FOR YOUR PROJECT EXECUTION IN KUWAIT & QATAR



**CRANES**



**HEAVY LIFT**



**INDUSTRIAL EQUIPMENT & MHE'S**

24x7 OPERATIONS  
365 DAYS / YEAR





# CRANES

**GLOBALY RANKED** CRANE RENTAL COMPANY\*.

**ALL TERRAIN (ATC)**

80 – 700 TONS

**ROUGH TERRAIN (RT)**

25 – 80 TONS

**TRUCK MOUNTED (TM)**

25 – 80 TONS

**CRAWLER**

75 – 650 TONS



\* #82 IN IC-50 RANKING LIST 2018



# HEAVY LIFT

FROM LIFT PLANNING TO PROJECT MANAGEMENT

**DEMAG AC 700-9** ALL TERRAIN CRANE OF **700T** LIFT CAPACITY.

**DEMAG CC 3800-1** CRAWLER CRANE OF **650T** LIFT CAPACITY AT **12M** RADIUS.

**PRIMEMOVERS: 8X6 AND 6X4 HEAVY DUTY HEADS.**

**MODULAR TRAILERS: 54 AXLE LINES UPTO 30 TONS / AXLE**





# MATERIAL HANDLING EQUIPMENT (MHE)

**TELESCOPIC FORK LIFTS  
3 – 5 TONS**



**MAST FORKLIFTS  
2 – 10 TONS**





**500 AMPS PORTABLE  
WELDING MACHINES**



# **INDUSTRIAL EQUIPMENT**

**185 TO 755 CFM  
SCREW COMPRESSORS**





# VALUE ADDED SERVICES



FULL MAINTENANCE AND TECHNICAL SUPPORT.

24/7 OPERATIONS, 365 DAYS A YEAR.

ADVANCED ERP MANAGEMENT SYSTEM.

REGULAR OPERATORS TRAINING.

IN-HOUSE MAINTENANCE FACILITY.







# POWER RENTAL

SHORT AND LONG TERM SOLUTIONS IN KUWAIT AND SAUDI ARABIA





# OVERVIEW



ON-DEMAND **GENERATORS RENTAL TO MULTI-MW POWER PROJECTS** IN KUWAIT AND KSA



## ON-DEMAND RENTAL

- CONSTRUCTION SITES
- OFFICES & FACTORIES & WAREHOUSES
- MILITARY
- PRIVATE EVENTS
- ACCOMODATION CAMPS
- SHOPPING MALLS
- HOTELS, RESORTS & VILLAS
- STADIUMS & SPORTING EVENTS

## MULTI MW POWER PROJECTS

- LV OR HV CONFIGURATIONS
- 50/60 HZ

## OIL & GAS INSTALLATIONS

- RELIABLE UNINTERRUPTED POWER SUPPLY



# POWER GENERATORS



ACOUSTICALLY ENCLOSED SOUND ATTENUATED **DIESEL** DG SETS

RANGE: **30 kVA - 1,250 kVA**



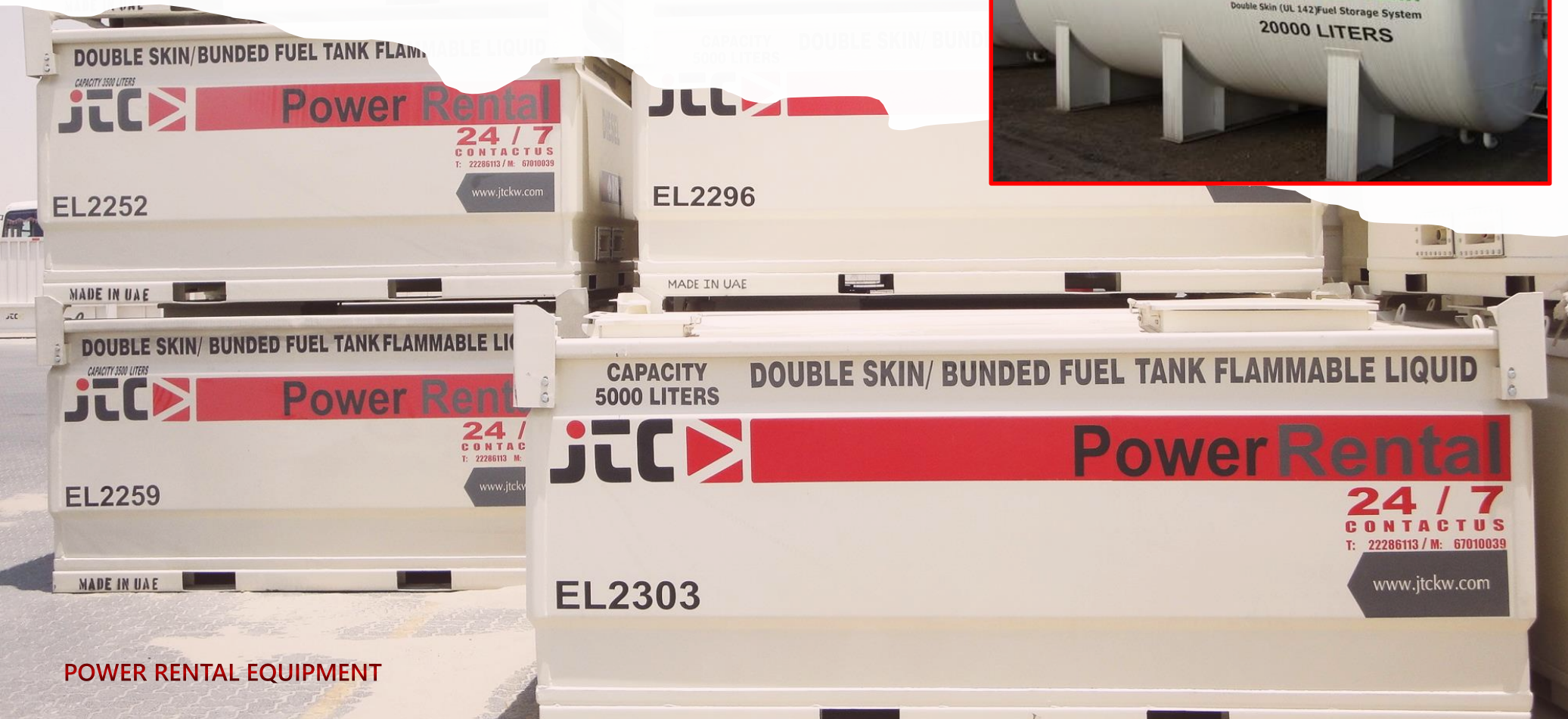
POWER RENTAL EQUIPMENT



# FUEL TANKS

AUXILLIARY BULK FUEL STORAGE

UL 142, DOUBLE SKIN,  
SKID MOUNTED AND ECO FRIENDLY



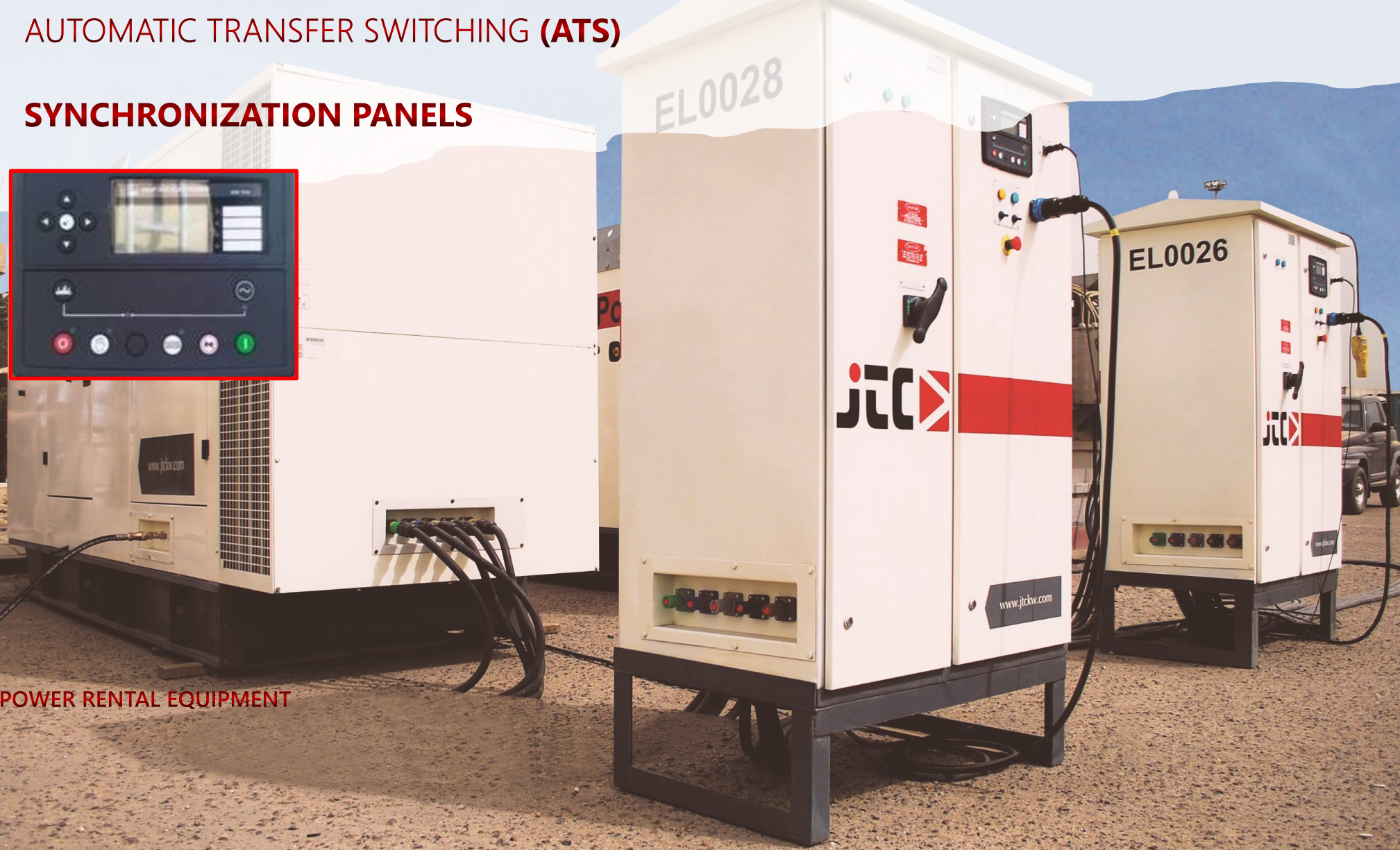
POWER RENTAL EQUIPMENT



# DISTRIBUTION BOARDS

AUTOMATIC TRANSFER SWITCHING (ATS)

SYNCHRONIZATION PANELS



POWER RENTAL EQUIPMENT



# OTHER ACCESSORIES



## TRANSFORMERS

- LOW AND HIGH VOLTAGE
- MULTI TAP, MULTI VOLTAGE CAPABILITY
- MODULAR, SELF-CONTAINED UNITS
- BUILT-IN PROTECTION AND SWITCHGEAR



## CABLES & CONNECTORS

- FLEXIBLE RUBBER COATED (HO7RNF)
- SAFE & DURABLE



## FUEL SYSTEMS



# VALUE ADDED SERVICES



FULL MAINTENANCE AND TECHNICAL SUPPORT.

24/7 OPERATIONS, 365 DAYS A YEAR.

ADVANCED ERP MANAGEMENT SYSTEM.

REGULAR TECHNICAL TRAINING.

IN-HOUSE MAINTENANCE FACILITY.



Jassim Transport Company

SUPERVISOR



# CONTACT US

## KUWAIT - CORPORATE OFFICE

ADD: ADJACENT TO CONTAINER TERMINAL, NEAR SHUWAIKH PORT, SHUWAIKH – KUWAIT.

TEL: + 965 2228 6100

FAX: + 965 2228 6124

EMAIL: [info@jtckw.com](mailto:info@jtckw.com)

WEB: [www.jtckw.com](http://www.jtckw.com)

## QATAR

ADD: AL WAAB BUILDINGS  
J BLOCK, ENTRANCE J2, DOHA - QATAR

TEL: + 974 4412 7325

FAX: + 974 4450 1255

EMAIL: [info.qa@jtckw.com](mailto:info.qa@jtckw.com)

## KINGDOM OF SAUDI ARABIA

ADD: KHALDIAH AREA, BUSINESS GATE, BUILDING 1220, DAMMAM - KSA

TEL: + 966 832 4223

FAX: + 966 832 8990

EMAIL: [info.ksa@jtckw.com](mailto:info.ksa@jtckw.com)

